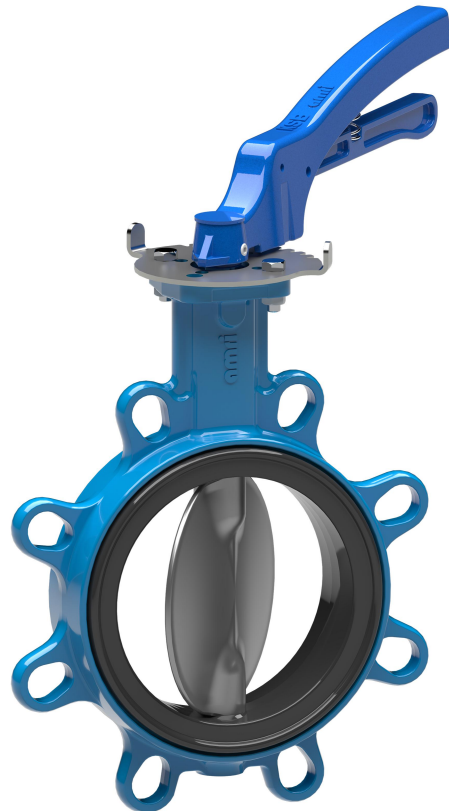


BOAX-B

Butterfly Valve



- Spray irrigation systems
- Domestic water supply
- Water extraction
- Hot-water heating systems

- Air-conditioning
- Washing plants
- General irrigation systems
- Swimming pools

- Pressure boosting
- Water treatment
- Rainwater harvesting



BOAX-B – Butterfly Valve

Benefits

■ Tight shut-off

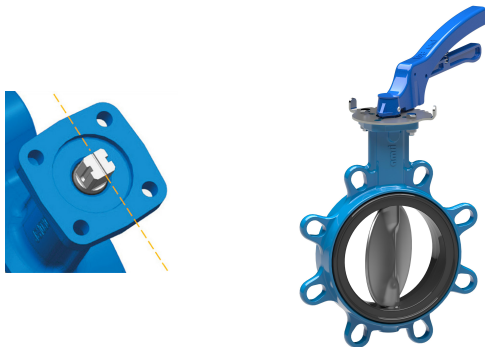
- Liner developed and manufactured by KSB in France
- The spherically machined valve disc and the matching spherically moulded liner ensure perfectly tight sealing to atmosphere.
- Sealing at the flanges is effected by the liner only.

■ Long service life

- Only the valve disc and liner are in contact with the fluid handled, therefore no risk of corrosion.
- Positive-locking splined or keyed connection of shaft and valve disc

■ High level of safety and reliability

- The position of the valve disc can be seen at the square shaft end to ISO 5211.
- Blowout-proof shaft and actuating shaft from DN 250 to DN 1000
- Manual actuator with locking device



Design

- Wafer-type body with flat faces - T1: DN 650 - 1000
- Semi-lug body - T2: DN 40 - 600
- Full-lug body with raised faces - T4: DN 40 - 600
- Flanged body with flat faces - T5: DN 650 to 1000 (DN 150 to 600 on request)

Combination options



Lever

Manual gearboxes

Pneumatic actuators

Electric actuators

Automation

Operating data

Characteristic	Value
Nominal pressure	PN 10/16
Nominal size	DN 40 - 1000
Max. permissible pressure [bar]	16 (DN 40 - 600) / 10 (DN 40 - 1000) at ambient temperature
Min. permissible temperature [°C]	≥ -10
Max. permissible temperature [°C]	≤ +130 (see below)
Valve for lubricating fluids	Maximum reference velocity: 3 m/s
Temperature with	
■ XC liner	■ -10 °C to +110 °C
■ XU liner	■ -10 °C to +130 °C
■ K liner	■ -5 °C to +90 °C
Downstream dismantling and dead-end service	Permissible
Shaft end	All DN's = Square end, ISO 5211

Materials

Actuation/automation	Material
Body	Nodular cast iron
Actuating shaft	Stainless steel
Valve disc	Nodular cast iron, stainless steel 316
Liner	EPDM (ACS), nitrile

Certificates on request

Versions available

Actuator/Automation	Type series
Levers	SR+, SP+, S+, CR+, CM+
Manual gearboxes	MA+, MS, MC
Pneumatic actuators	ACTAIR EVO / DYNACTAIR EVO
Electric actuators	GS-SA, SQ, AQ, AQL
Hydraulic actuators	HQ EVO
Position indicator	AMTROBOX
Open/close control unit	AMTRONIC U
Positioner	SMARTRONIC U