

# ISORIA 10/16

## Butterfly Valve



- Water extraction
- Chemical industry
- Cooling circuits
- Seawater desalination by reverse osmosis

- Flue gas desulphurisation
- Food industry / beverage industry
- Paper industry / pulp industry
- Spray irrigation systems
- Descaling units

- General irrigation systems
- Washing plants
- Paint shops
- Shipbuilding
- Mixing
- Mining



# ISORIA 10/16 – Butterfly Valve

## Benefits

### ■ Flexible and versatile

- Slim profile with minimal footprint
- Improved design and materials for harsh environments
- Special designs for specific requirements available on request

### ■ Tight shut-off and reliable sealing to atmosphere

- KSB liners made in France with proven in-house expertise
- Precision-engineered, spherically machined disc and moulded liner for perfect sealing to atmosphere
- No flange gaskets required

### ■ Safety and reliability first

- New anti-blowout system and reinforced design
- Various anti-corrosive coatings for body and valve disc
- Square shaft ends to ISO 5211 for universal use

### ■ Long service life

- Only the valve disc and liner are in contact with the fluid handled.
- Valve disc edge polished for reduced friction and extended liner life
- Splined shaft/disc connection for optimum torque transmission
- Self-lubricating bearings for smooth daily operation

### ■ Easy to service

- Quick liner replacement on site
- Easy, cost-effective servicing
- Spare parts kits compatible with old and new designs (shaft)

## Materials

Component	Material
Body <sup>1)</sup>	Lamellar graphite cast iron, cast steel, nodular cast iron
Actuating shaft <sup>1)</sup>	Stainless steel
Valve disc <sup>1)</sup>	Nodular cast iron, stainless steel / aluminium bronze / cast iron with anti-corrosive coating
Liner <sup>1)</sup>	EPDM (ACS), nitrile, CSM (Hypalon), Viton, epichlorohydrin, high-temperature silicone, HNBR, polybutadiene

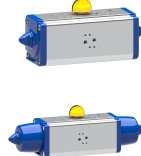
## Combination options



Levers



Manual gearboxes



Pneumatic actuators



Electric actuators



Hydraulic actuator



Automation



## Operating data

Characteristic	Value	
	ISORIA 10	ISORIA 16
Nominal pressure PN [bar]	10	16
Nominal size DN [mm]	40 - 1000	40 - 1000
Max. permissible pressure [bar]	10	16
Min. permissible temperature [°C]	≥ -30	≥ -30
Max. permissible temperature [°C]	≤ 200	≤ 200
Actuation at ΔP [bar]	10 max.	16 max.
at ambient temperature		
Vacuum operation down to	0.3 bar absolute	
Max. permissible flow velocity at operating pressure	2 - 3 m/s max. for liquid or lubricating fluids	

## Versions available

Actuator/Automation	Type series
Levers	SR+, SP+, S+, CR+, CM+
Manual gearboxes	MA+, MS, MC
Pneumatic actuators	ACTAIR EVO / DYNACTAIR EVO
Electric actuators	GS-SA, SQ, AQ, AQL
Hydraulic actuators	HQ EVO
Position indicator	AMTROBOX
Open/close control unit	AMTRONIC U
Positioner	SMARTRONIC U

<sup>1</sup> Other configurations possible on request. Certificate on request.