

SISTO-16

Diaphragm Valve PN16



SISTO Armaturen S.A. 

-
- Chemical industry
 - Industry/process engineering
 - Condensate transport
 - Power stations
 - Cooling circuits
 - Seawater desalination
 - Petrochemical industry
 - Process engineering
 - Water treatment
 - Paint shops
 - Swimming pools
 - Shipbuilding
 - Air-conditioning systems
 - Waste water treatment plants
 - Mining
-



SISTO RP

More information
www.ksb.com/en-de



SISTO-16 – Diaphragm Valve PN16

Benefits

■ Maximum service life and pressure limit

- The diaphragm is confined and supported for maximum diaphragm life and pressure limit.

■ Reliable sealing to atmosphere and absolutely tight shut-off

- The specially confined diaphragm provides absolutely tight shut-off as well as hermetic sealing to atmosphere and of all operating elements.

■ High corrosion resistance

- High-quality linings offer reliability and a long service life.

■ High functional reliability

- Balanced suspension of the diaphragm increases the diaphragm's functional reliability.

■ Fluid purity

- The valve's design without dead volumes ensures optimum conditions for high-purity fluids and prevents deposits.

■ Optimised long-term operation

- The stem protection feature integrated in the position indicator prevents ingress of contaminants.

■ Smooth actuation

- The thrust bearing minimises closing torques.

■ Readily identifiable position

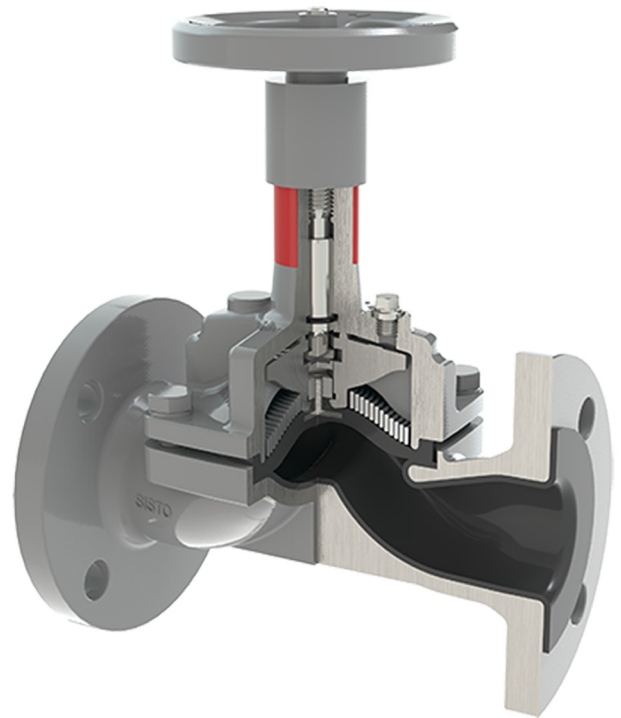
- The valve's position can be easily identified via a clear visual indicator, also from a distance.

■ High operating reliability

- The stem and all internal operating elements are not in contact with the fluid.

Operating data

Characteristic	Value
Nominal pressure	PN 16 ¹⁾
Nominal size	DN 15 - 300
Max. permissible pressure [bar]	16 ²⁾
Min. permissible temperature [°C] ³⁾	≥ -10
Max. permissible temperature [°C] ³⁾	≤ +160



Materials

Component	Material
Body	Grey cast iron
Bonnet	Grey cast iron
Diaphragm	EPDM, IIR, CSM, NBR, FKM, PTFE/EPDM
Connections	Flanged ends, threaded socket ends
Lining	Hard rubber, butyl
Coating	Rilsan, ECTFE

¹ DN 250 - 300 = PN 10

² DN 250 - 300 = 10 bar

³ The temperatures indicated are for orientation only; they are not valid for all operating conditions.